

2011 Hong Kong Open v1



Oil Pattern Distance:	40 Feet	Reverse Brush Drop:	31 Feet	Oil Per Board:	40 uL
Forward Oil Total:	14.12 mL	Reverse Oil Total:	11.68 mL	Volume Oil Total:	25.8 mL
Forward Boards Crossed:	353 Boards	Reverse Boards Crossed:	292 Boards	Total Boards Crossed:	645 Boards

	Start	Stop	Loads	Speed	Crossed	Start	End	Feet	T.Oil
1	2L	2R	4	14	148	0.0	5.9	5.9	5920
2	8L	8R	2	14	50	5.9	9.8	3.9	2000
3	9L	9R	2	18	46	9.8	14.9	5.1	1840
4	10L	10R	2	18	42	14.9	20.0	5.1	1680
5	11L	11R	1	18	19	20.0	22.5	2.5	760
6	12L	11R	1	18	18	22.5	25.0	2.5	720
7	13L	12R	1	18	16	25.0	27.5	2.5	640
8	14L	13R	1	18	14	27.5	30.0	2.5	560
9	2L	2R	0	18	0	30.0	33.0	3.0	0
10	2L	2R	0	26	0	33.0	40.0	7.0	0

Navigation: Forward Reverse More

	Start	Stop	Loads	Speed	Crossed	Start	End	Feet	T.Oil
1	2L	2R	0	30	0	40.0	30.0	-10.0	0
2	12L	11R	1	22	18	30.0	26.9	-3.1	720
3	11L	10R	1	18	20	26.9	24.4	-2.5	800
4	9L	9R	1	18	23	24.4	21.9	-2.5	920
5	7L	7R	2	18	54	21.9	16.8	-5.1	2160
6	6L	6R	1	14	29	16.8	14.9	-1.9	1160
7	2L	2R	4	14	148	14.9	7.0	-7.9	5920
8	2L	2R	0	14	0	7.0	0.0	-7.0	0

Navigation: Forward Reverse More

Conditioner:
Infinity

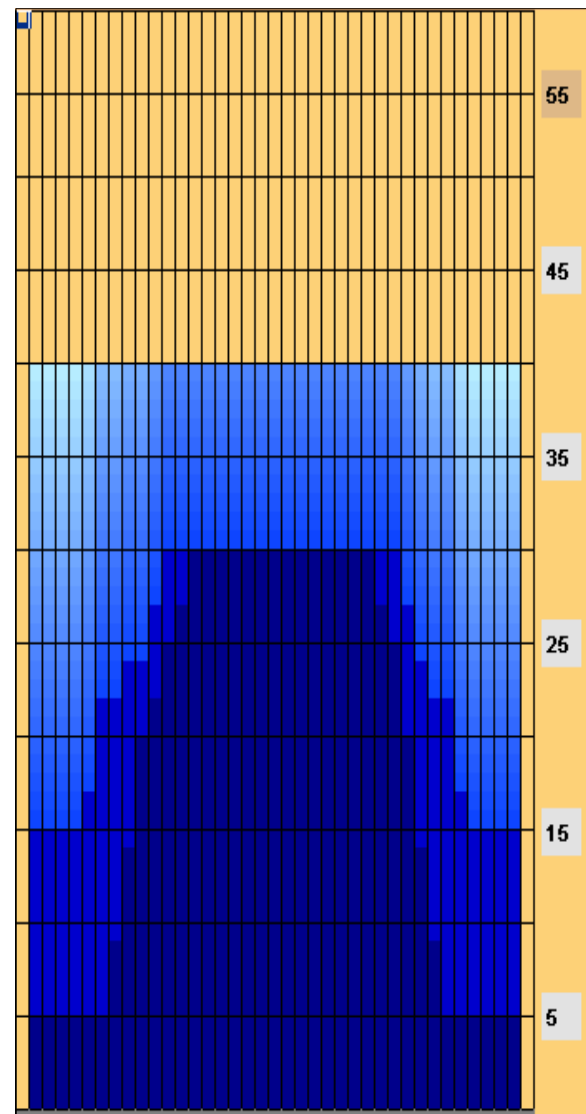
TransferType:
Transfer Brush

Forward

Reverse

Combined

Buff



Item	3L-7L:18L-18R	8L-12L:18L-18R	13L-17L:18L-18R	18L-18R:17R-13R	18L-18R:12R-8R	18L-18R:7R-3R
Description	Outside Track:Middle	Middle Track:Middle	Inside Track:Middle	Middle: Inside Track	Middle:Middle Track	Middle:Outside Track
Track Zone Ratio	2.73	1.35	1.01	1	1.29	2.73

