

# SSP-Opulent Under 14 & 18 - Short Pattern (33)



**Oil Pattern Distance:** 33 Feet      **Reverse Brush Drop:** 30 Feet      **Oil Per Board:** 40 uL  
**Forward Oil Total:** 12.68 mL      **Reverse Oil Total:** 10.28 mL      **Volume Oil Total:** 22.96 mL  
**Forward Boards Crossed:** 317 Boards      **Reverse Boards Crossed:** 257 Boards      **Total Boards Crossed:** 574 Boards

	Start	Stop	Loads	Speed	Crossed	Start	End	Feet	T.Oil
1	2L	2R	1	10	37	0.0	0.0	0.0	1480
2	4L	4R	1	10	33	0.0	1.4	1.4	1320
3	5L	5R	2	10	62	1.4	4.2	2.8	2480
4	6L	6R	2	14	58	4.2	8.1	3.9	2320
5	7L	7R	2	18	54	8.1	13.2	5.1	2160
6	8L	8R	2	18	50	13.2	18.3	5.1	2000
7	9L	9R	1	22	23	18.3	21.4	3.1	920
8	2L	2R	0	26	0	21.4	27.0	5.6	0
9	2L	2R	0	30	0	27.0	33.0	6.0	0

Navigation: Forward Reverse More

	Start	Stop	Loads	Speed	Crossed	Start	End	Feet	T.Oil
1	2L	2R	0	30	0	33.0	24.0	-9.0	0
2	8L	8R	2	14	50	24.0	20.1	-3.9	2000
3	7L	7R	2	14	54	20.1	16.2	-3.9	2160
4	6L	6R	2	14	58	16.2	12.3	-3.9	2320
5	5L	5R	2	10	62	12.3	9.5	-2.8	2480
6	4L	4R	1	10	33	9.5	8.1	-1.4	1320
7	2L	2R	0	10	0	8.1	0.0	-8.1	0

Navigation: Forward Reverse More

Conditioner:  
Type In or Select One

TransferType:  
Type In or Select One

Forward



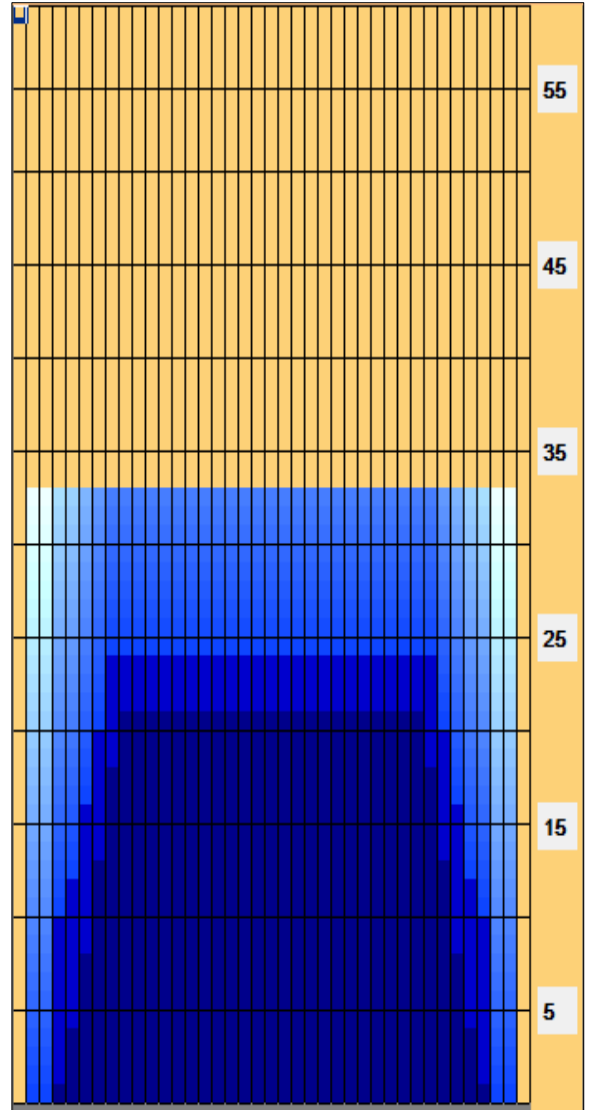
Reverse



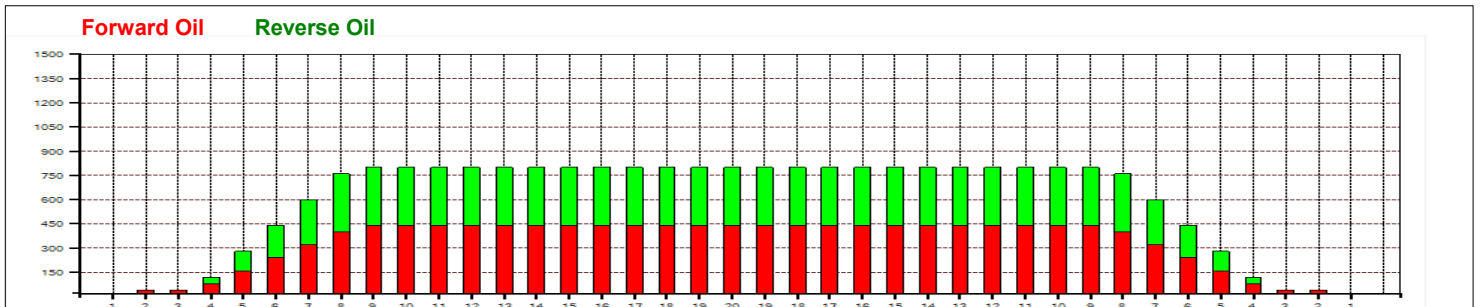
Combined



Buff



Item	3L-7L:18L-18R	8L-12L:18L-18R	13L-17L:18L-18R	18L-18R:17R-13R	18L-18R:12R-8R	18L-18R:7R-3R
Description	Outside Track:Middle	Middle Track:Middle	Inside Track:Middle	Middle:Inside Track	Middle:Middle Track	Middle:Outside Track
Track Zone Ratio	2.7	1.01	1	1	1.01	2.7



# SSP-Opulent Under 14 & 18 - Medium Pattern (39)



**Oil Pattern Distance:** 39 Feet      **Reverse Brush Drop:** 36 Feet      **Oil Per Board:** 40 uL  
**Forward Oil Total:** 13.92 mL      **Reverse Oil Total:** 11.32 mL      **Volume Oil Total:** 25.24 mL  
**Forward Boards Crossed:** 348 Boards      **Reverse Boards Crossed:** 283 Boards      **Total Boards Crossed:** 631 Boards

	Start	Stop	Loads	Speed	Crossed	Start	End	Feet	T.Oil
1	2L	2R	2	10	74	0.0	1.4	1.4	2960
2	6L	6R	3	10	87	1.4	5.6	4.2	3480
3	7L	7R	1	14	27	5.6	7.5	1.9	1080
4	8L	8R	1	14	25	7.5	9.4	1.9	1000
5	9L	9R	1	14	23	9.4	11.3	1.9	920
6	10L	10R	1	14	21	11.3	13.2	1.9	840
7	11L	11R	1	14	19	13.2	15.1	1.9	760
8	12L	12R	1	14	17	15.1	17.0	1.9	680
9	13L	13R	1	14	15	17.0	18.9	1.9	600
10	14L	14R	1	14	13	18.9	20.8	1.9	520
11	15L	15R	1	14	11	20.8	22.7	1.9	440
12	16L	16R	1	14	9	22.7	24.6	1.9	360
13	17L	17R	1	14	7	24.6	26.5	1.9	280
14	2L	2R	0	30	0	26.5	39.0	12.5	0

	Start	Stop	Loads	Speed	Crossed	Start	End	Feet	T.Oil
1	2L	2R	0	30	0	39.0	34.0	-5.0	0
2	13L	13R	2	26	30	34.0	26.7	-7.3	1200
3	11L	11R	2	22	38	26.7	20.5	-6.2	1520
4	9L	9R	1	22	23	20.5	17.4	-3.1	920
5	7L	7R	2	18	54	17.4	12.3	-5.1	2160
6	5L	5R	1	18	31	12.3	9.8	-2.5	1240
7	3L	3R	2	14	70	9.8	5.9	-3.9	2800
8	2L	2R	1	14	37	5.9	4.0	-1.9	1480
9	2L	2R	0	10	0	4.0	0.0	-4.0	0

Conditioner:  
Type In or Select One

TransferType:  
Type In or Select One

Forward



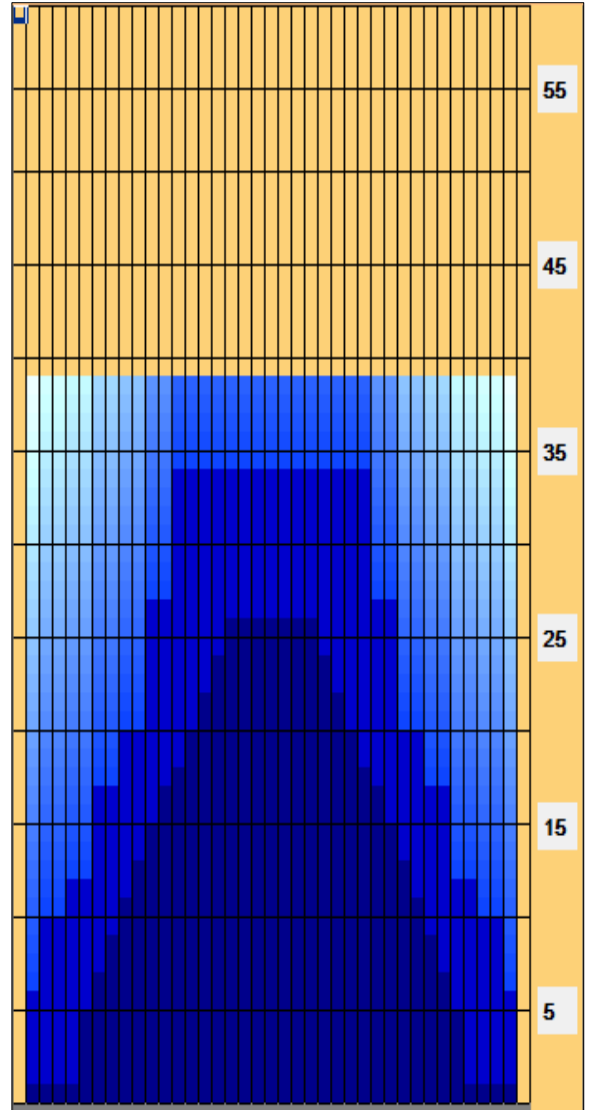
Reverse



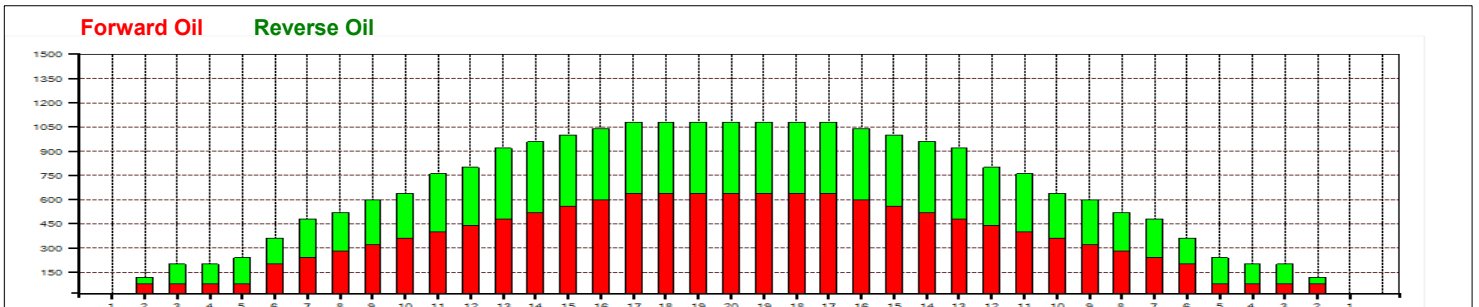
Combined



Buff



Item	3L-7L:18L-18R	8L-12L:18L-18R	13L-17L:18L-18R	18L-18R:17R-13R	18L-18R:12R-8R	18L-18R:7R-3R
Description	Outside Track:Middle	Middle Track:Middle	Inside Track:Middle	Middle:Inside Track	Middle:Middle Track	Middle:Outside Track
Track Zone Ratio	3.65	1.63	1.08	1.08	1.63	3.65



# SSP-Opulent Under 14 & 18 - Long Pattern (45)



**Oil Pattern Distance:** 45 Feet      **Reverse Brush Drop:** 41 Feet      **Oil Per Board:** 40 uL  
**Forward Oil Total:** 16.88 mL      **Reverse Oil Total:** 9.92 mL      **Volume Oil Total:** 26.8 mL  
**Forward Boards Crossed:** 422 Boards      **Reverse Boards Crossed:** 248 Boards      **Total Boards Crossed:** 670 Boards

Start	Stop	Loads	Speed	Crossed	Start	End	Feet	T.Oil
1	2L	2R	5	10	185	0.0	5.6	7400
2	4L	4R	3	14	99	5.6	11.5	3960
3	6L	6R	2	18	58	11.5	16.6	2320
4	10L	10R	3	22	63	16.6	25.9	2520
5	12L	12R	1	22	17	25.9	29.0	680
6	2L	2R	0	30	0	29.0	45.0	0

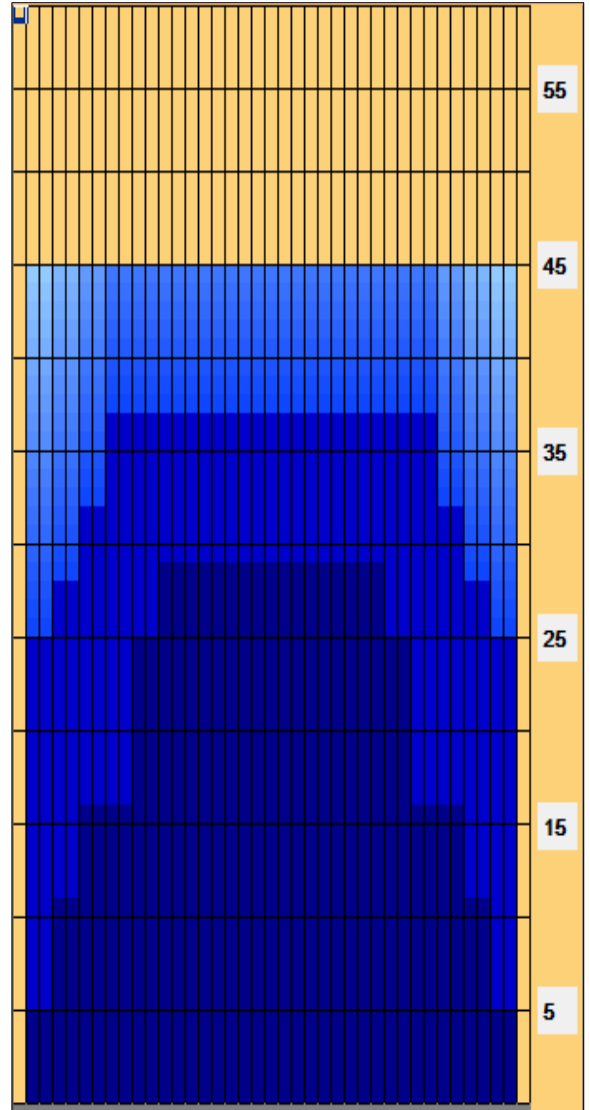
Navigation: Forward Reverse More

Start	Stop	Loads	Speed	Crossed	Start	End	Feet	T.Oil
1	2L	2R	0	30	0	45.0	37.0	-8.0
2	8L	8R	2	18	50	37.0	31.9	-5.1
3	6L	6R	2	14	58	31.9	28.0	-3.9
4	4L	4R	2	10	66	28.0	25.2	-2.8
5	2L	2R	2	10	74	25.2	22.4	-2.8
6	2L	2R	0	10	0	22.4	0.0	-22.4

Navigation: Forward Reverse More

Conditioner:  
 Type In or Select One  
 TransferType:  
 Type In or Select One

- Forward
- Reverse
- Combined
- Buff



Item	3L-7L:18L-18R	8L-12L:18L-18R	13L-17L:18L-18R	18L-18R:17R-13R	18L-18R:12R-8R	18L-18R:7R-3R
Description	Outside Track:Middle	Middle Track:Middle	Inside Track:Middle	Middle:Inside Track	Middle:Middle Track	Middle:Outside Track
Track Zone Ratio	1.75	1.1	1	1	1.1	1.75

